

DIGITAL KARAOKE

DIGITAL KARAOKE ASSEMBLY INSTRUCTIONS



WWW.DIGITALKARAOKE.CO.UK

THE KARAOKE SYSTEM

Your Karaoke system will consist of four parts.

- 1) **THE POD** - which contains two speakers, speaker stands, speaker leads and mixer.
- 2) **THE FLIGHTCASE** - which contains, the Digital Karaoke player with over 10,000 pre-loaded songs.
- 3) **THE TOOLBOX** - which contains all other cables and microphones for the system.
- 4) **THE MONITOR** - which will display the words to the pre-loaded karaoke tracks.



1) **THE POD**



2) **THE FLIGHTCASE**



3) **THE TOOLBOX**



4) **THE MONITOR**



THE POD - Release the clips and lift off the speakers from the pod, which will reveal the **MIXER**. Make sure that the **MIXER** is facing you as pictured, on a solid surface, such as a four legged table.

THE FLIGHTCASE - Place next to the **MIXER**. Open the front and back by twisting the wings on either side of the front and back. Ensure the **KARAOKE MACHINE** is facing you and correct way up.



ERECTING THE SPEAKER STANDS

The **SPEAKER STANDS** are stored behind the **MIXER**. NB: The stands are clipped in. Place the stands as far away from where the singers will be performing as possible.

Loosen the bottom wing nut as in **FIG 1** (but not too far, to prevent the wing nut coming out), extend the legs to make a support, but be careful not to over extend. Then re-tighten the same bottom wing nut, (but do not over tighten).

FIG 1



Loosen the top nut (if present), again not too far and pull the pole up until you see a red line with a hole above it. Insert pin or nail provided, which stops the pole from collapsing, As shown in **FIG 2**. You will find spare pins in the top flap of the **TOOLBOX**.

FIG 2



Then place the **SPEAKER** on top of the pole. Repeat this with the other **SPEAKER**.

WIRING THE SPEAKERS

Wire the speakers to the **MIXER** with the speaker cables, they can be found in the right flap next to the **MIXER**.

CAUTION! There is one lead per speaker, one end goes into the speaker and the other end into the back of the **MIXER**, as shown in **FIG 3**. Repeat this with the second speaker.



FIG 3

Place left speaker cable into left output in the back of **MIXER**. With the other end into the front of the **LEFT SPEAKER**.

Place right speaker cable into right output in the back of **MIXER**. With the other end into the front of the **RIGHT SPEAKER**.

CONNECTING THE MONITOR

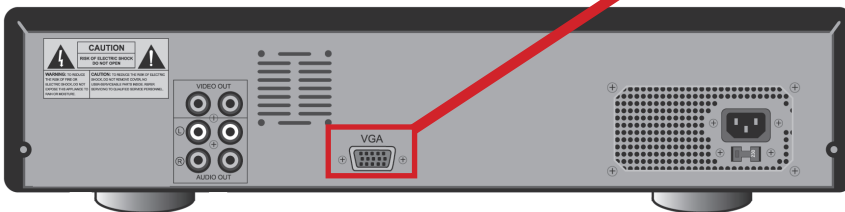
The **MONITOR** will already have the power supply and picture cable connected. Unwind from the base and stand on top of the **KARAOKE FLIGHT CASE** as pictured in **FIG 4**.



FIG 4

Connect the **MONITOR**, via the monitor cable into the back of the **KARAOKE MACHINE**, marked **VGA**. As pictured in **FIG 5**.

FIG 5



CONNECTING YOUR OWN TELEVISION (IF APPLICABLE)

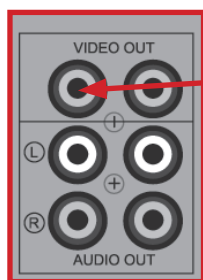
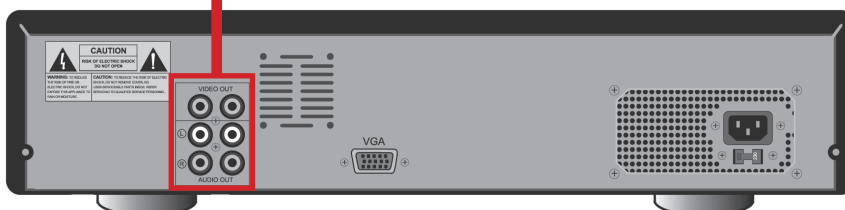


FIG 6

Using a single phono lead as indicated in **FIG 6**, connect one end of the phono lead into one of the **VIDEO OUT** sockets, on the back of the **KARAOKE MACHINE**. In some cases only one of the **VIDEO OUT** sockets are active, if so, this will be indicated on your machine. The other end goes into your television's AV socket. This will only work if you have a phono input on your television.



POWER SUPPLIES

TOOL BOX - In the box you will find some kettle leads. Place one in the back of the **KARAOKE PLAYER** and another in the back of the **MIXER**. You will already have one coming from the **MONITOR**, giving you **THREE** loose plugs.

Plug these **THREE** plugs into the four gang extension lead.

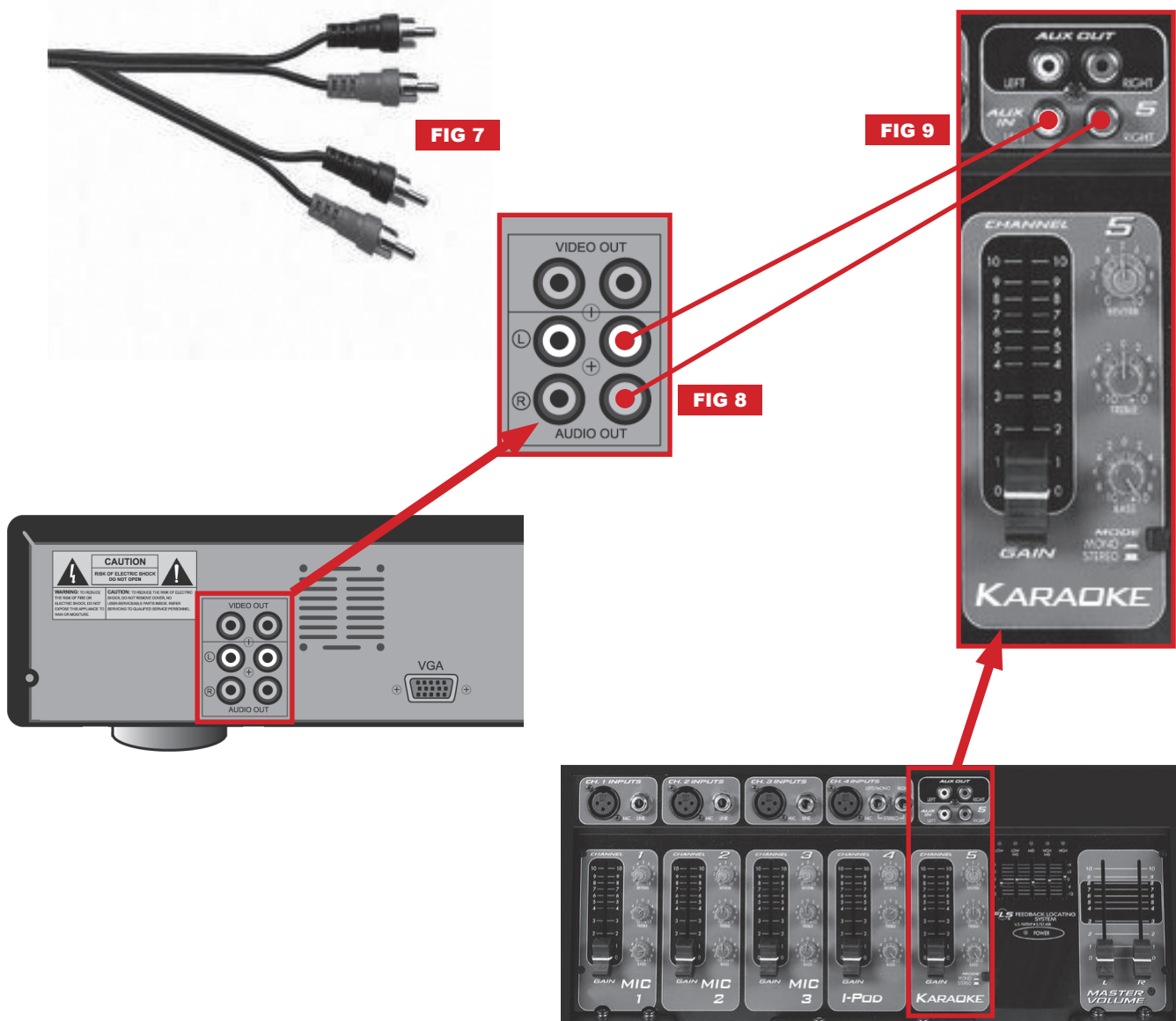
HOWEVER DO NOT PLUG IT IN THE WALL YET!

This single extension lead with **ONE** plug will power all the equipment, once you have completed set up.

WIRING THE KARAOKE MACHINE TO THE MIXER

Locate the (**2 X PHONO TO 2 X PHONO**) audio cables as shown in **FIG 7**, on one end of the cable put one of the connectors into the **LEFT SOCKET** and one into the **RIGHT SOCKET** of the **KARAOKE MACHINE**, pictured in **FIG 8**. Then on the other end of the (**2 X PHONO TO 2 X PHONO**) audio cable, put into the left and right **AUX IN** sockets which is located above the fifth slider, as pictured in **FIG 9**.

CAUTION!: be careful to use **AUDIO IN** and **NOT** AUDIO OUT, which are very close.



CONNECTING AN AUDIO DEVICE TO MIXER

You can connect an IPod, iPhone, MP3 player, laptop or any other audio device with a headphone socket.

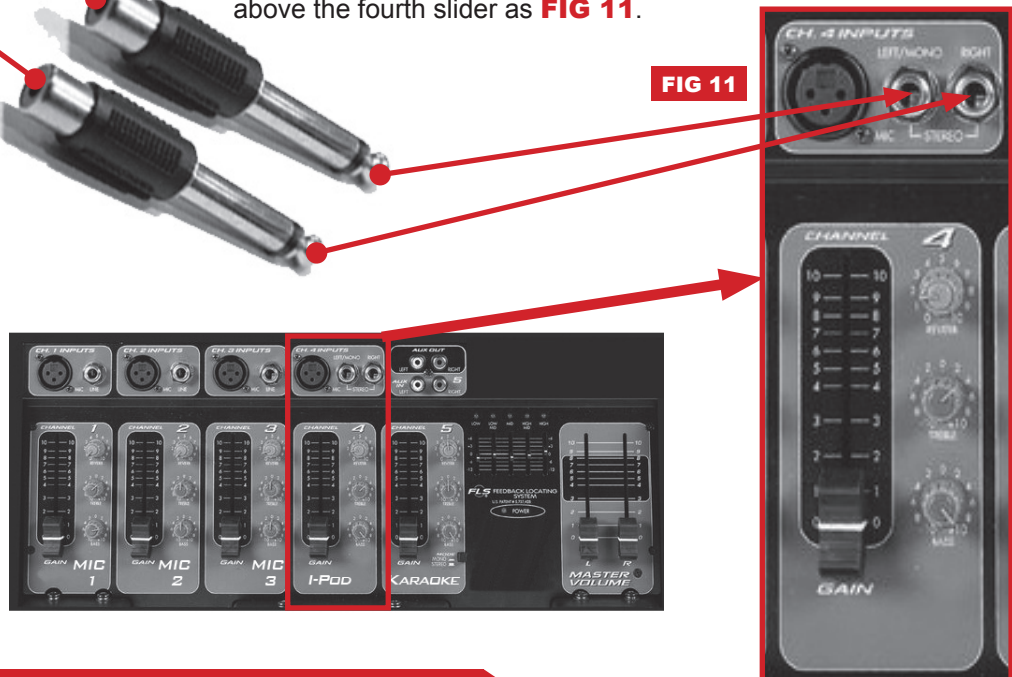
NB: You will not get the words on the screen, just the music from your own device!

Using the **LEAD**, pictured in **FIG 10**, connect the headphone end to your device, and the other end should already have two adapters, also shown in **FIG 10**, if not, add connectors as indicated below.

Now connect these two jack adapters to the the mixer, which is above the fourth slider as **FIG 11**.

FIG 10

FIG 11



CONNECTING THE MICROPHONES

You have **THREE MICROPHONES** and mic cables in the **TOOL BOX**. The cables come in various colours but look like **FIG 12**. Try to use different colours to identify the different microphones for each performer.

Insert one end of the **MICROPHONE CABLE** into the input, above the first slider. The other end into your first **MICROPHONE**. Repeat this for slider two and three. You will now have three microphones connected.

FIG 12



POWERING UP THE SYSTEM

CAUTION! Before powering on or off, ensure that all sliders on the mixer are down. Switch the equipment on or off by using the switches on the machines, **NOT BY SWITCHING OFF AT THE WALL!**

Plug the **SINGLE PLUG** of the 4 gang socket into the wall and make sure it is switched on.

To switch the **KARAOKE MACHINE** on, press the **WHITE BUTTON** on the top left of the **KARAOKE MACHINE**, this will take a while to load the software.

At the back of the **MIXER** you will find a **SWITCH** to turn this on.

Ensure that your **MONITOR** is switched **ON**.

Once the **KARAOKE MACHINE** has loaded the software, you will have the **BLUE SELECT SONG SCREEN** visible on the monitor.

NAVIGATING THE MIXER

The **MIXER** has **FIVE CHANNELS** and a **MASTER VOLUME**. Each channel is numbered **1** to **5** as illustrated below.

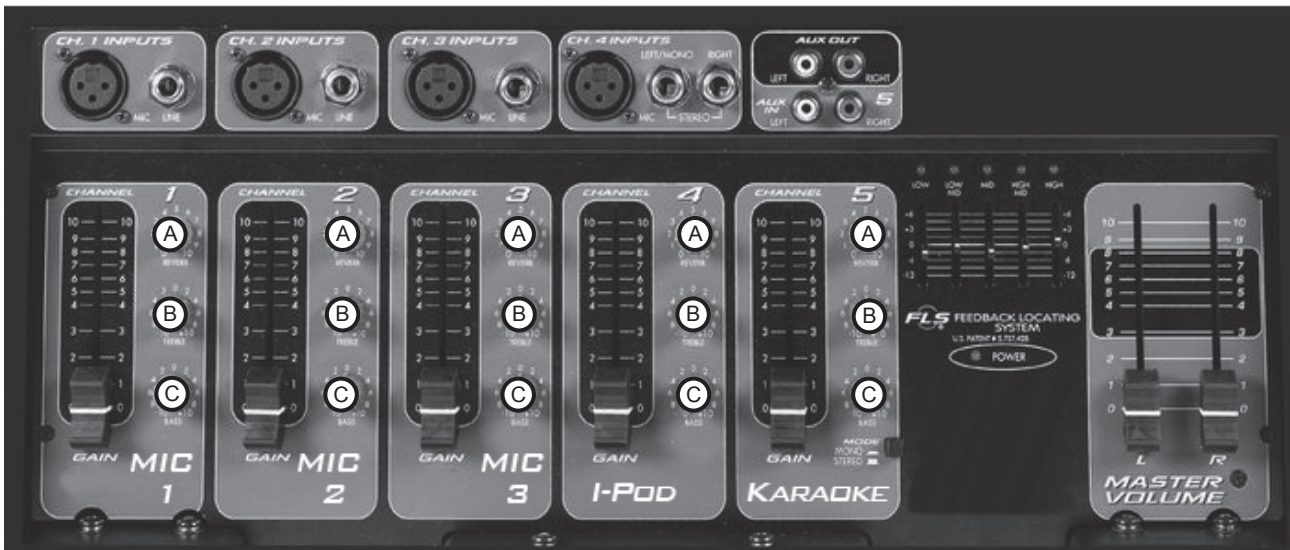
Channels **1**, **2** and **3** are your microphones. (Identified by the coloured cables).

Channel **4** is your I-Phone, I-Pod or any device attached to the headphone socket.

Channel **5** is the Karaoke player.

Each **A**, **B** and **C KNOB** relates to it's **SLIDER**.

KNOB A = Echo (Reverb). **KNOB B** = Treble. **KNOB C** = Bass



KNOB A on channels **1-3** should be approximately at number **8**, (adjust as preferred).

KNOB A on channels **4** and **5** should be on **ZERO**, this is because you do not want echo (reverb) on your music, as this will have a distorted sound.

KNOBS B and **C** on all channels should be at 12 o'clock, (straight up) although you can adjust as preferred if you wish.

MASTER VOLUME - LEFT AND RIGHT

The **MASTER VOLUME SLIDERS** controls on the complete mix up or down on each corresponding speaker.

TIP: If you experience feedback (high pitch noise) it could be one or more of the following:

- Your microphones are too close to the speakers (Move the speakers away from the singers).
- Your microphones are turned too high (Turn the microphone volume down).
- Your performers are not singing close enough to the microphone (Hold microphone closer to your mouth).

KARAOKE SONG BOOKS

You will have **TWO KARAOKE BOOKS**. There are over **10,000** songs listed.

ARTIST ORDER (Red Book)

For browsing purposes use this book as all songs by a single artist will be batched together. If you are looking for a show tune they will be listed under the show title and Christmas songs are listed together under Christmas.

SONG ORDER (Blue Book)

If you know the song name you want to sing, we recommend song order.

LASTEST ADDITIONS can be found inside the cover of each book.

USING THE KARAOKE PLAYER

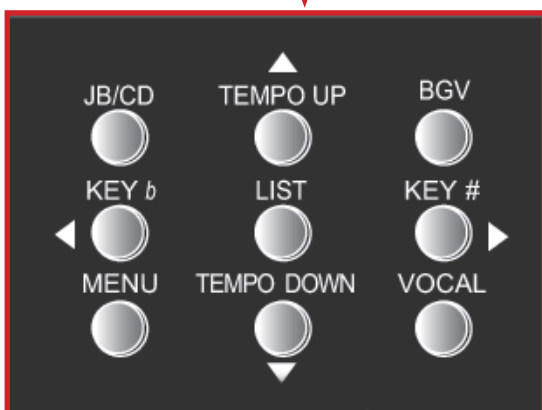
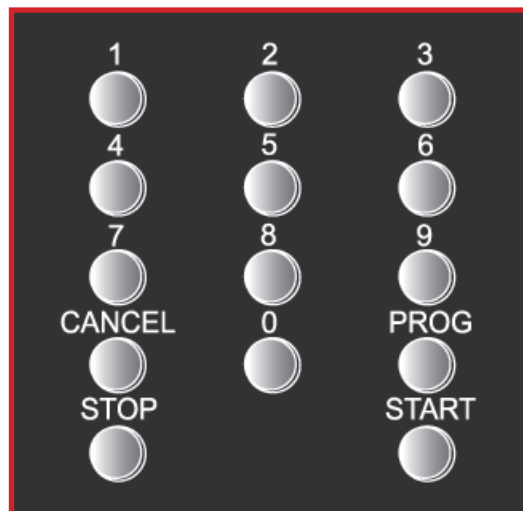
SELECTING A SONG

Select required song from the song book and look for the number on the right hand side of the song title.

Punch the number in on the keypad as shown. The song title will show on the screen. If you do not press **START** within 10 seconds you will need to put the number in again. Press **START**, the song will now load, if you press **START** again it will go into pause mode. Press **START** again to resume. Most songs begin around 10 seconds.

If you make a mistake, press **STOP** and it goes back to zero.

If you wish to programme multiple songs, use the **PROG** button instead. You will still need to press **START**. The songs will automatically go to your next choice. You can still continue to select additional songs by pressing **PROG**.



CHANGING THE KEY

Some performers may find it easier to sing a song in a different **KEY** from the original. This means the Karaoke music will be higher or lower than the original **KEY**.

To raise the **KEY** press **KEY#**, press once to bring the **KEY** change slider on screen and again to raise one semi-tone.

To lower the **KEY** press **KEYb**, press once to bring the **KEY** change slider on screen and again to lower one semi-tone.

When the song ends or **STOP** button is pressed, the **KEY** will reset to the original, so there is never a need to cancel the **KEY** change.

PROGRAMMING

CREATING A PLAY LIST

To create a play list, select the song number and press the **PROG** button instead of pressing the start button, you can do this as many times as you require. When you have programmed all the songs, press **START**. When you press **START** the songs will automatically play your song selections in turn. While the songs are playing you can continue to add extra songs by press **PROG** which will add the selected songs to the end of the play list. If you want to cancel a song at any point, simply press **STOP** and the next song on the play list will start, if one has been selected.

PACKING UP THE EQUIPMENT

SWITCHING OFF THE EQUIPMENT

WARNING!: NEVER SWITCH OFF FROM THE WALL, WITHOUT POWERING DOWN FIRST. (ONCE SWITCHED OFF, LEAVE FIVE MINUTES BEFORE SWITCHING OFF FROM THE WALL). This is to give the system's software a chance to close down.

Turn off the **KARAOKE MACHINE** with the white button on the front.

Turn off the **MIXER** with the switch on the back.

MONITOR

Disconnect the **MONITOR** from the **KARAOKE MACHINE**, disconnect from the power and wrap both the monitor lead and power supply lead, around the base of the **MONITOR**.

THE POD

Please ensure that the speaker stands are replaced behind the **MIXER** and clicked in place.

WHEN TAKING THE SPEAKER STANDS DOWN, IF THE PIN IS NOT CONNECTED TO THE STAND LEAVE IT IN WITH THE CABLES.

Ensure the speaker cables are in the right hand flap next to the mixer, and nothing else except the speakers on top are in the **POD**.

All other wires, microphones and leads are to go in the **TOOLBOX**.

KARAOKE MACHINE

Place the two **KARAOKE SONG BOOKS** in the gap above the machine and secure the front and back panels by twisting the wing nuts on the sides securely.

You will now have **FOUR ITEMS** as presented to you, ready to be returned.

INFO DETAILS

Digital Karaoke

Emergency Contact Number: 0207 241 4660

REFER A FRIEND AND GET **15% OFF** YOUR NEXT HIRE!

If you refer a friend after your first hire, you will receive your next hire at 15% discount*

* The discount will apply to your next hire and not to the referred friend. This offer excludes December.